

YOUR PARTNER FOR WATER WELL PRODUCTS



SJE RHOMBUS[®]

www.sjrhombus.com

H2O Drive® Constant Pressure Control

Variable Frequency Drive Well Pump Control Panel



The H2O Drive® control panel is designed to control a three phase submersible well pump in constant pressure control applications.

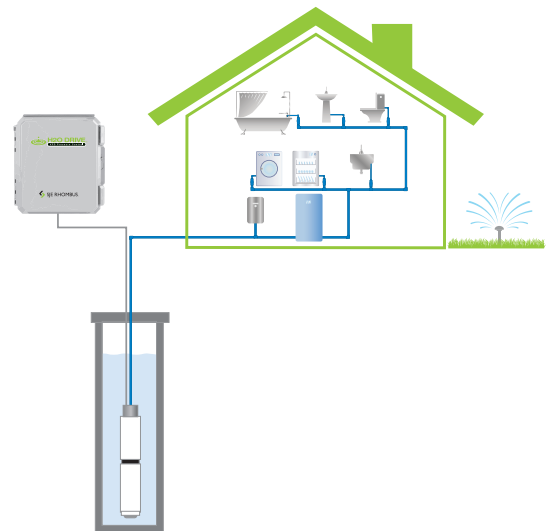
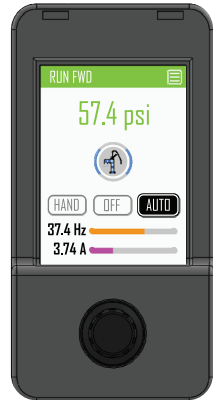
As flow conditions change in the pumping system, the VFD is able to automatically control the pump speed and maintain a constant pressure. The desired set pressure is entered on the color LCD display. The pressure transducer measures the pump system pressure.

Our H2O Drive® control panels are available for:

- Single phase, 240V models up to 30 HP, available with or without sine filters
- Three phase, 240V models up to 30 HP, available with or without load reactors
- Three phase, 480V models up to 75 HP, available with or without load reactors

FEATURES

- 2 step quick start wizard for easy setup
 1. Enter set pressure
 2. Enter well pump amps (SFA)
- Graphic color display (LCD):
 - High Brightness / Direct sunlight readable
 - Removable/handheld for easy programming
 - Discharge Pressure (PSI)
 - Pump run indication
 - Pump speed (Hz)
 - Pump Amps (A)
 - Message bar (Status & Alarm)
 - Alarm history
 - Password protection
 - Rotary button for easy menu navigation
- Pump dry run alarm
- Well recharge timer function
- High and Low Pressure Alarm
- Pump motor overload protection
- Monitors transducer faults
- Includes 0-150 PSI pressure transducer with cable
- 2 digital inputs for optional level or floor sensor
- 60Hz max. motor speed (default)
- Up to 80Hz max. possible in select systems



WellZone® Pressure Controller

Single Phase Well Pump Control Panel



2-Wire Model

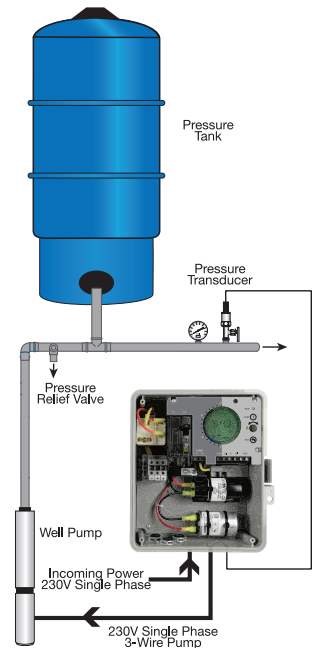


3-Wire Model

The WellZone® digital controller provides pressure control for single phase submersible well pump applications. It uses a 0-150 PSI pressure transducer to monitor the discharge pressure and turns the pump ON and OFF according to the adjustable Start and Stop setpoints. The LCD display allows for quick view of the system pressure, run status, hours run and pump cycles. The rotary button provides the user with a simple navigation method through the menu and program settings. It features built in pump protection including rapid cycling and dry run. It is preprogrammed to run the pump as the pressure drops below 40 PSI and stop as the pressure rises above 60 PSI. High & Low pressure settings are available with an auxiliary alarm relay.

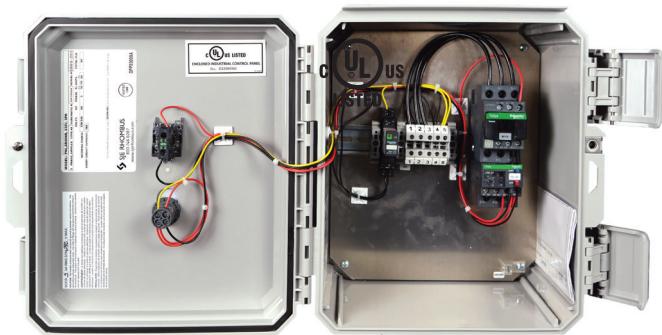
FEATURES

- Includes a 0-150 PSI pressure transducer (No pressure switch needed)
- LCD display with bar graph
 - Pressure monitoring
 - Pump amps monitoring
 - Pump on monitoring
 - Pump Run Time
 - Pump Run Cycles
- Adjustable pressure set points
 - Start /Stop pressure set points
 - High /Low pressure alarms
- Advanced functions
 - Dry Run protection
 - Well recharge timer
 - Rapid cycle protection
 - Water filter replacement notification
 - Alarm history
- 2 and 3 wire models available
- Five-year limited warranty on panel
- Two-year limited warranty on pressure transducer



Select Start™ LT Starter Boxes

Three Phase Starter Boxes



Panel layout may vary with options.

Select Start™ LT three phase starter boxes provide a simple and reliable means of controlling a 230 VAC three phase well pump or booster pump. Select Start™ LT starter boxes utilize an external device, like a pressure switch, float switch, or a run signal from an irrigation controller to activate the motor starter and run the pump in Auto Mode. It has an adjustable overload that allows for easy adjustment of motor overload current. Common applications include pump control for irrigation systems, water storage tanks, or pressure boosting.

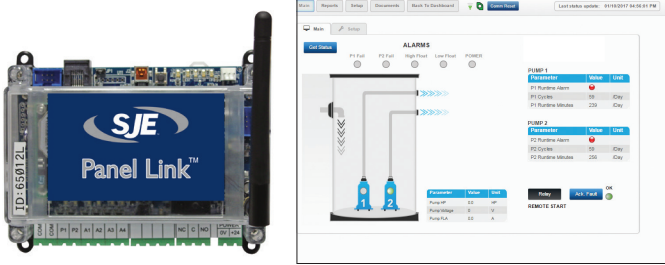
Other features include:

- 24 VAC Interface Relay - allows an irrigation controller to run the pump in AUTO mode
- Tank Fill Relay (Optional) - allows the pump to be controlled by two float switches to fill a holding tank*

*Control float switches sold separately.

SJE Panel Link™

Web-Based Cellular Remote Monitoring for Duplex Lift Stations



The SJE Panel Link controller offers cloud based management of duplex wastewater pump stations.

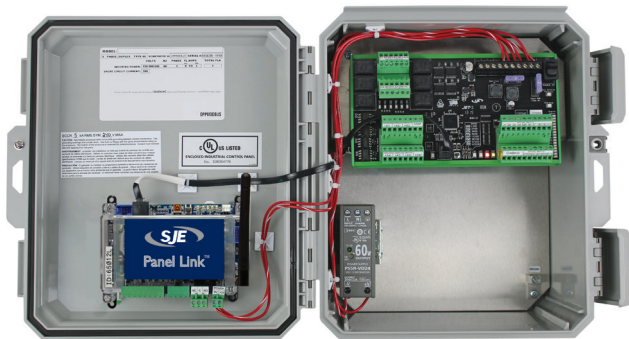
Alarms are monitored and service personnel notified in the event of failure via email and text SMS text messaging. Data logging and trending of critical information enables users to visually track system performance and recognize impending problems. Station data can be seen in a simple and intuitive format from a web browser on a computer, tablet or smartphone.

FEATURES

- 2 models available: Light or Premium
- Built-in I/O (no controller required)
- 2 pump run digital inputs
- 4 configurable digital alarm inputs
- 1 relay output
- Battery backup for digital inputs
- Access multiple SJE Panel Link products from one user friendly portal
- User is able to enter the tank diameter for in-flow and pump discharge flow monitoring
- 1 level input (4-20 mA) - Premium model only
- 1 motor amps input (4-20 mA) - Premium model only
- Level monitoring and data logging via 4-20 mA signal - Premium model only
- Monitor and log pump current - Premium model only

SJE Panel Link™ Flex

Cloud-Based Cellular Monitoring



The SJE Panel Link™ Flex is a simple and effective tool to monitor one or multiple remote sites. Information from your station is transmitted over a cellular network to a cloud server, where it can be viewed from any web browser using a secure login. Receive alarm notifications, track equipment performance, visualize site operation status via a graphical interface, and generate reports.

FEATURES

- Simple and clear graphical HMI
- Operator assignment of I/O descriptions
- Notifications received via SMS, email, or viewed on the web portal
- Alarm notifications can be assigned to multiple users with escalation and acknowledgment
- Battery backup to provide loss of power alarm notification
- Analog inputs are configurable to provide high and low-level alarms
- Reporting and pump diagnostic information
- Graphical data trends, accumulation bar graphs, and data tables
- Interactive mapping location of all remote stations
- First year of cell service is included
- iOS or Android App is available for your mobile device
- Dashboards available (templates):
 - Generic - Ideal for water treatment applications up to 4 pumps
 - Lift Station - For duplex or triplex lift stations volumetric flow calculation (cycle based)

