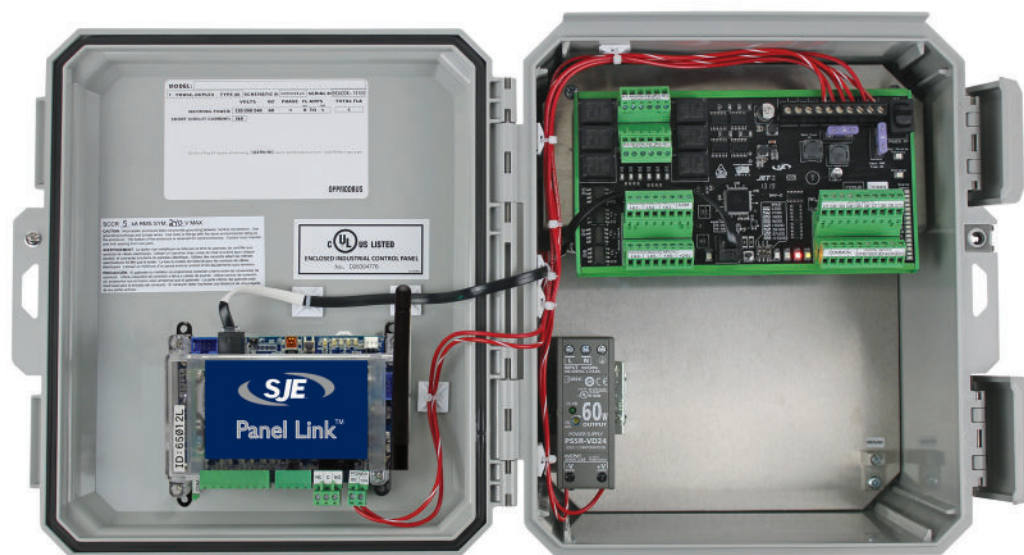


# SJE PANEL LINK™ FLEX

## Cloud-Based Cellular Monitoring



The SJE Panel Link™ Flex is a simple and effective tool to monitor one or multiple remote sites. Information from your station is transmitted over a cellular network to a cloud server, where it can be viewed from any web browser using a secure login. Receive alarm notifications, track equipment performance, visualize site operation status via a graphical interface, and generate reports.

- Simple and clear graphical HMI
- Operator assignment of I/O descriptions
- Notifications received via SMS, email, or viewed on the web portal
- Alarm notifications can be assigned to multiple users with escalation and acknowledgment
- Battery backup to provide loss of power alarm notification
- Analog inputs are configurable to provide high and low-level alarms
- Reporting and pump diagnostic information
- Graphical data trends, accumulation bar graphs, and data tables
- Interactive mapping location of all remote stations
- First year of cell service is included
- iOS or Android App is available for your mobile device
- Dashboards available (templates):
  - Generic - Ideal for water treatment applications up to 4 pumps
  - Lift Station - For duplex or triplex lift stations volumetric flow calculation (cycle based)

### SPECIFICATIONS

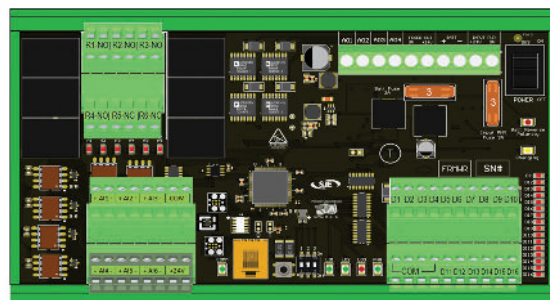
**Cellular Radio:** 4G LTE

**Battery Backup:** 12 V, 7.2 Ah, SLA

**24 VDC Power Supply:** 120 VAC input; 2.5 Amps

**Flex Module:**

- 6 analog inputs, 4-20mA differential and optically isolated, 12-bit resolution
- 16 digital inputs: 12 VDC common ground
  - D1-D4 designated Motors Running (runtime and cycles)
  - D5 & D6 designated as Flow Totalizer inputs (max rate 100 HZ)
  - D7-D16 configurable as Alarm inputs
- 6 relay outputs: 250V, 5A (resistive)
  - R1-R4 Normally Open
  - R5 & R6 Normally Closed
  - Relay outputs are momentary operation



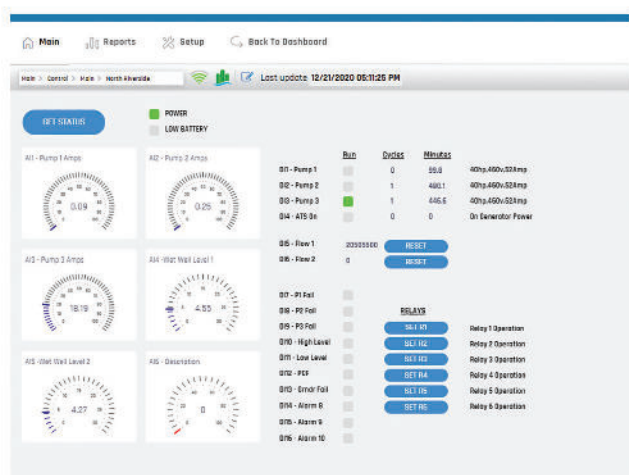
# SJE PANEL LINK™ FLEX

## Cloud-Based Cellular Monitoring

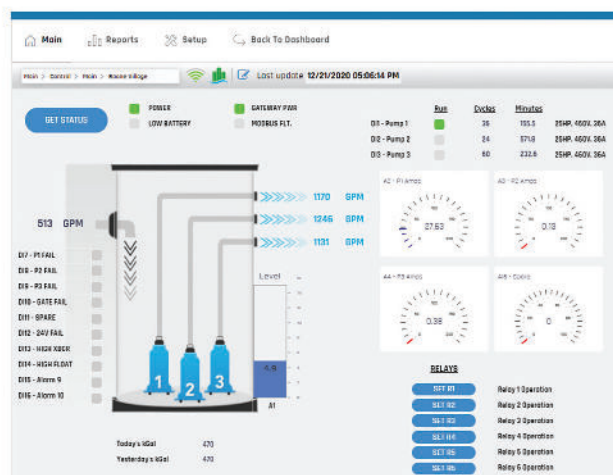
| Part #  | Description  |
|---------|--|
| 1107534 | SJE Panel Link™, NEMA 4X, Flex, Gateway, 4G, Global                |
| 1107535 | SJE Panel Link™, Stainless Steel NEMA 4X, Flex, Gateway, 4G Global |



## AVAILABLE TEMPLATES



Generic



Lift Station (Duplex or Triplex)

