

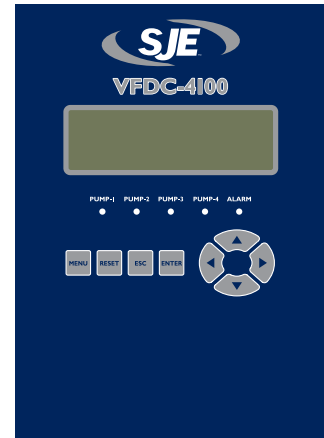
VFDC-4100 CONTROLLER

Microprocessor-based controller for constant pressure applications.

The **VFDC-4100** controller is a microprocessor-based controller specifically designed for constant pressure applications using 1 - 4 variable frequency drives. It features P.I.D. control, automatic alternation, data logging, and communication capabilities. A backlit graphic display allows users to monitor pressure, pump speeds and alarm status. The VFDC-4100 controller uses a menu driven setup that makes navigation and configuration fast and simple.

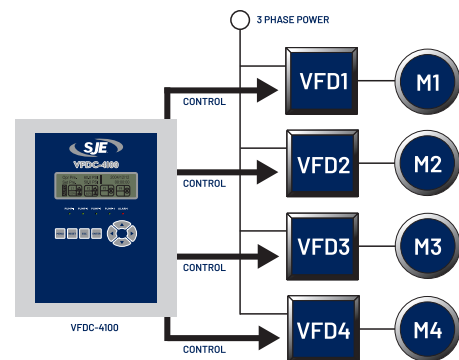
FEATURES

- 1 to 4 VFD operation
- P.I.D. control
- Graphic screen display with LED back-lighting
- System status display
 - Operating pressure
 - Set Pressure
 - Time and date
 - Alarm with time and date
- Pump status display
 - Pumps in use
 - Lead pump
 - Pump run/stop
 - Pump speed
 - VFD fault
 - Hour meter for each pump
- Four arrow buttons for easy navigation and setup
- Automatic alternation (cycle-based or time-based)
- 13 programmable digital outputs
- Scheduled pressure setup function
- Jockey pump operation (smaller lead pump)
- Pressure transmitter setup
- RS232 Modbus Serial communication
- High and low pressure alarms
- Low suction pressure/low level with programmable restart
- One-year limited warranty

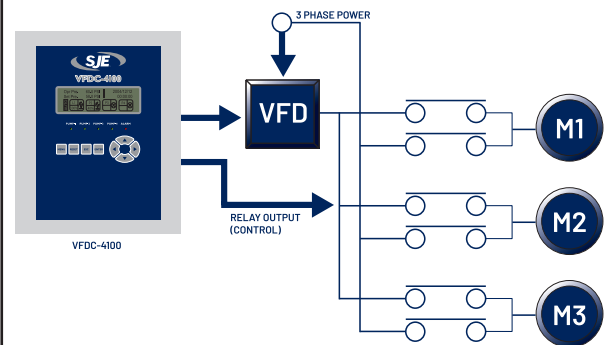


Customized Controls

4 Pump Control Configuration



Deep Well Submersible Pump Application



SJE RHOMBUS®

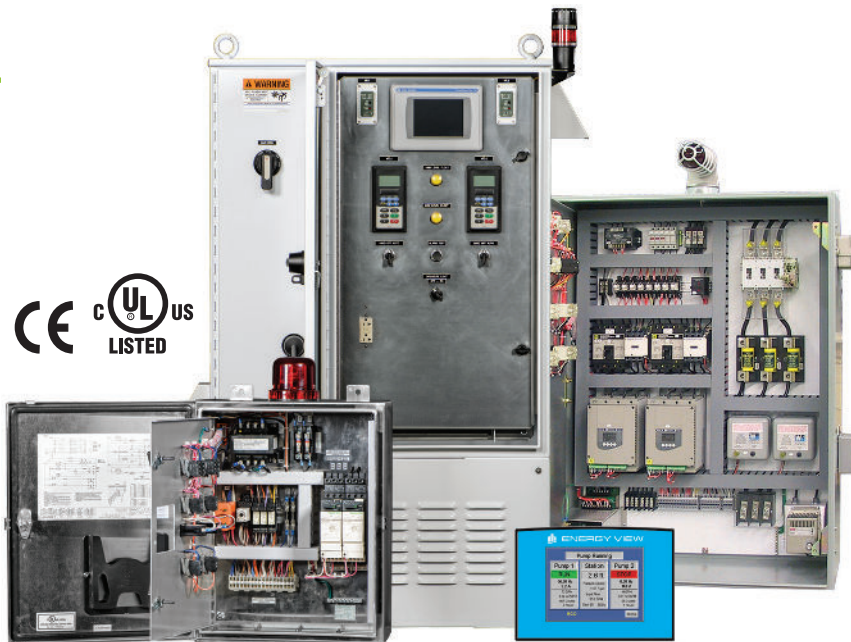
Phone: +1 218 847 1317
email: customer.service@sjeinc.com
www.sjrhombus.com **A.13**

CUSTOMIZED CONTROLS

Industrial and Municipal - PRIMEX®

FEATURES

- Variable Frequency Drives
- Reduced voltage starters
- Programmable Logic Controllers (PLC)
- Service entrance rating
- Manual transfer switch gear
- SCADA systems
- Operator interface (HMI)
- Remote monitoring
- Telemetry/alarm dialers
- Multiple pump control
- User specified components
- Voltage/current meters
- Line and load reactors
- Third party approvals:
UL508A, UL698A, ULNANNY, cUL



SJE PANEL LINK™

Comprehensive cloud based monitoring systems designed for wastewater pump stations and other applications.

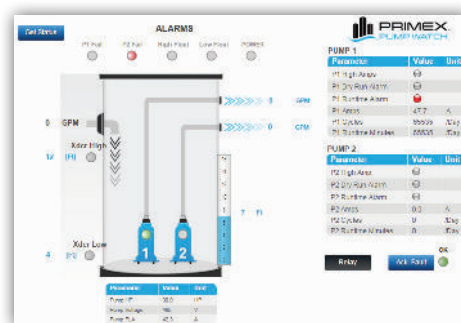
SJE Panel Link™ offers a simple and effective tool for management of wastewater or water collection systems via a cellular network.

Alarms are monitored and service personnel notified in the event of failure. Data logging and trending of critical information enables users to visually track system performance and recognize impending problems. Station data can be seen in a simple and intuitive format from a web browser on a PC, tablet or smartphone.



FEATURES

- Graphics HMI, simple and clear station status
- Alarm notification via email, text messaging (SMS) and web portal
- Battery backup for power loss detection and notification
- Data logging and historical trending
- Four configurations available:
 - Light
 - Premium
 - Gateway
 - Flex Expansion Module



RTU Visualization



SJE RHOMBUS

www.sjerrhombus.com

customer.service@sjeinc.com