

CONTROL PANEL ACCESSORIES

To Finish Any Onsite Installation

CORD SEALS

Provides strain relief and a liquid-tight seal.

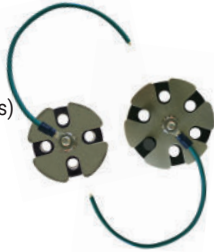
- Seals 1-4 cables in 2" terminal adapters
- Seals 1-6 cables in 2½" terminal adapters
- PVC plugs included (for unused cable positions)
- Ground wire

SEAL: neoprene

WASHERS: stainless steel

NUT AND BOLT: stainless steel

WIRE/CABLE ACCOMMODATED: SJOW, SJTW, 18/2, 18/3, 16/2, 16/3, 14/2 and 14/3



CABLE CONNECTORS

Provides strain relief and a liquid-tight seal.

- Round and Flat UF cable specifications on back side



VDE Approved

HUB ASSEMBLY

Provides liquid-tight conduit attachment location.

- Available in 3/4, 1, 1.5, 2 and 2.5 inch sizes.
- UL Listed and CSA Certified terminal adapter



TERMINAL ADAPTER (HUB): PVC

GASKET: neoprene

LOCK NUT: metal

PANEL MOUNTING POST

Provides easy installation of control panels.

- Removable front access door for easy wiring
- Can be mounted directly into ground, over a 4x4 post, or conduit for a quick, clean, easy installation
- Includes 2 stainless steel mounting bolts
- Includes drilling template
- Accommodates enclosures up to 14 x 12 x 6 inches (35.6 x 30.5 x 15.2 cm)

POST: Polyethylene (34 x 7 x 6 inches)

BOLTS: 4X rated stainless steel with gaskets



RISER MOUNTING KIT

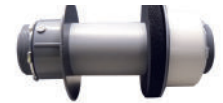
Secures panel mounting post to tank riser.

Includes:

- (2) hub assemblies
- PVC pipe and connecting hardware
- Conduit for routing pump and float from tank riser to post



unassembled



assembled

SIMPLEX INSTALLATION KIT

Provides easy weather-proof wire installation for simplex control panels.

Includes:

- 2" hub assembly
- 2" cord seal (seals 1-4 cables)
- 3/4" hub assembly



DUPLEX INSTALLATION KIT

Provides easy weather-proof wire installation for duplex control panels.

Includes:

- 2.5" hub assembly
- 2.5" cord seal (seals 1-6 cables)
- 3/4" hub assembly



C-LEVEL™ SIMULATOR

Easy-to-use, hand-held test instrument designed to generate an adjustable C-Level™ simulation signal.



4-20mA SIMULATOR

Easy-to-use, hand-held test instrument designed to generate an adjustable 4-20mA signal from loop power.



CONTROL PANEL ACCESSORIES - Cord Seals, Hub Assembly, Simplex Installation Kit, Duplex Installation Kit, Cable Connectors, Panel Mounting Post, Riser Mounting Kit, C-Level™ Sensor Simulator, and 4-20mA Simulator.

Part #	Description
1008517	4 Cable Cord Seal
1037126	6 Cable Cord Seal
1002574	1/2 inch Round Cable Connector (RCC-8)
1002575	3/4 inch Round Cable Connector (RCC-12)
1009868	1 inch Round Cable Connector (RCC-16)
1002576	1/2 inch Flat UF Cable Connector (UFCC-8)
1002577	3/4 inch Flat UF Cable Connector (UFCC-12)
1030564	3/4 inch Hub Assembly
1009305	1 inch Hub Assembly
1008848	1.5 inch Hub Assembly
1008849	2 inch Hub Assembly
1037128	2.5 inch Hub Assembly
1106083	Panel Mounting Post
1038262	Riser Mounting Kit (2 inch)
1053756	Riser Mounting Kit (2.5 inch)
1038029	Simplex Installation Kit
1038030	Duplex Installation Kit
1038326	C-Level™ Sensor Simulator
1039199	4-20mA Simulator

ROUND CABLE SPECIFICATIONS

MATERIAL: polyimide flame-resisting, self-extinguishing plastic

O RING: neoprene plastic

HOLE REQUIREMENT: NPT threaded OR clearance holes
(jam nut included)

RCC-8

NPT Hub: .5 inch (1.27cm)

Maximum Diameter: .480 inch (1.22 cm)

Minimum Diameter: .270 inch (.68 cm)

Wire/Cable (AWG) Accommodated: 18/2, 18/3, 18/4, 16/2, 16/3, 16/4, 14/2, and 14/3

RCC-12

NPT Hub: .75 inch (1.90 cm)

Maximum Diameter: .709 inch (1.80 cm)

Minimum Diameter: .545 inch (1.38 cm)

Wire/Cable (AWG) Accommodated: 14/2, 14/3, 14/4, 12/2, 12/3, 12/4, 10/2, and 10/3

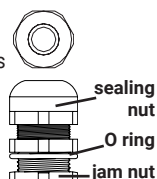
RCC-16

NPT Hub: 1.0 inch (2.54 cm)

Maximum Diameter: .98 inch (2.49 cm)

Minimum Diameter: .71 inch (1.80 cm)

Wire/Cable (AWG) Accommodated: Round cable with outside diameter within range identified above.



FLAT UF CABLE SPECIFICATIONS

MATERIAL: weather-stabilized thermo plastic

O RING: neoprene plastic

HOLE REQUIREMENT: NPT threaded OR clearance holes
(jam nut included)

UFCC-8

NPT Hub: .50 inch (1.27 cm)

Maximum: .26 x .56 inch (.66 - 1.42 cm) slot

Wire/Cable (AWG) Accommodated: 14/2, 12/2, 10/2

UFCC-12

NPT Hub: .75 inch (1.90 cm)

Maximum: .26 x .60 inch (.66 - 1.52 cm) slot

Wire/Cable (AWG) Accommodated: 14/3, 12/3

