

In-Site® Reporting Software Installation Guide

Installing In-Site Reporting Application for Reviewing Data

SUPPORTED PLATFORMS

The In-Site® Reporting application is designed to run on Microsoft Windows Vista*. It is also supported for use on Windows 2000 and Windows XP x86 installations that have the .NET framework 2.0 or higher installed. If the .NET framework is not installed, the In-Site installer will prompt you to install it. Running the program executable without the framework present will result in an error.

*x64 (i.e., 64 bit) versions of Vista and Windows XP are not explicitly supported or tested.

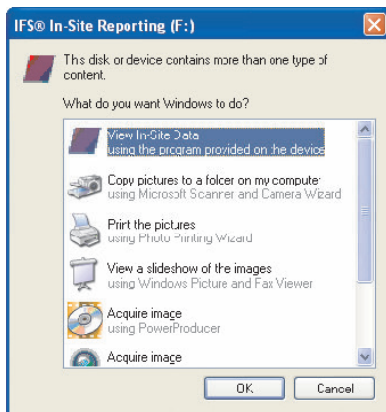
MINIMUM SYSTEM REQUIREMENTS

- Intel Pentium III 800 MHz or AMD Duron 800 MHz
- 512 MB RAM
- Windows 2000 Service Pack 3, Windows XP Service Pack 2, Windows Vista
- 2 MB free hard drive space (+ 280 MB for .NET 2.0 installation on Windows 2000 & XP)
- 1024 x 768 screen resolution
- Available USB port (**Use only memory stick provided by SJE Rhombus.**)

QUICK START GUIDE

Please read instructions thoroughly before beginning the software installation process.

1. Insert the USB flash drive into the USB port on your computer.
2. A dialog similar to the following will appear:



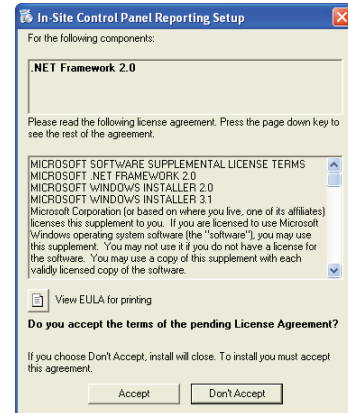
3. Select the "View In-Site Data" item and click the "OK" button.

Note: Microsoft .NET Framework 2.0 is needed for installation of In-Site software.

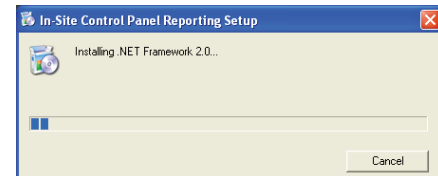
4. If Microsoft .NET Framework 2.0 **is not** already installed on your computer, installation of the program will begin automatically. Proceed to step 5.

If .NET **is** already installed on your computer, skip to step 6 for In-Site software installation instructions.

5. When the following dialog appears, read the Microsoft License agreement and click "ACCEPT".



Microsoft.NET installation will begin.



Note: Once the .NET software is complete, your computer **may** want to restart. Remove the flash drive from your computer and after restart is complete, reinsert the flash drive. Proceed with In-Site software instructions.

6. The In-Site installation setup wizard will run automatically.

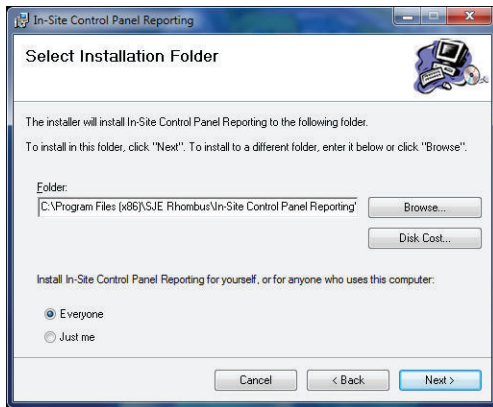


7. Press the "Next" button to continue.

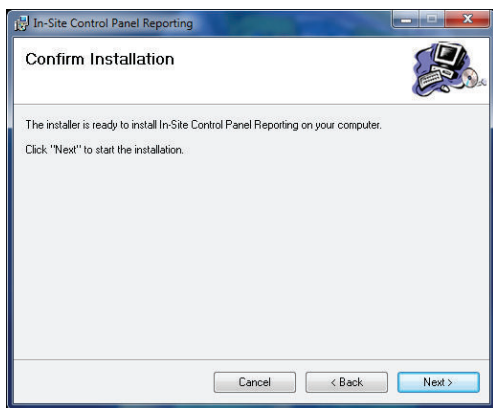
8. The software license agreement will appear. Read the agreement and click the "I Agree" radio button and then the "Next" button to proceed.



9. The following dialog will appear to allow you to select the installation location and specify users for the application.



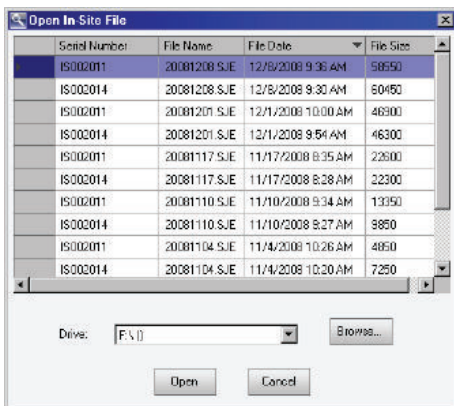
10. Press the "Next" button to continue.
11. Press "Next" again to start the installation process.



12. When the software installation is complete, press "Close" to exit the installation setup wizard.
13. To run the In-Site software after a data download has occurred, insert the USB flash drive into The USB port on your computer.
14. A dialog similar to the one in step 2 will appear. Click on "View In-Site Data" and click "OK". The In-Site program will run.

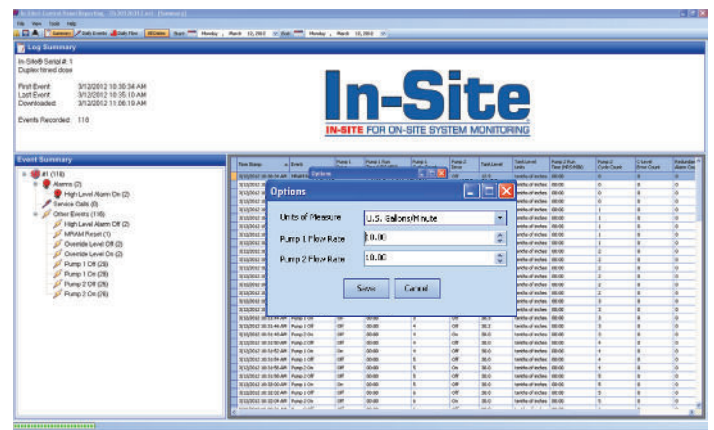
REVIEWING INFORMATION

15. Select the data file you wish to view and click "Open".



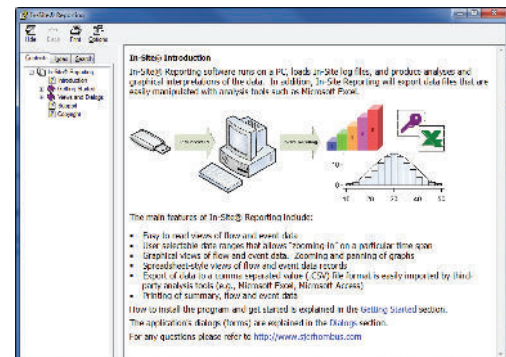
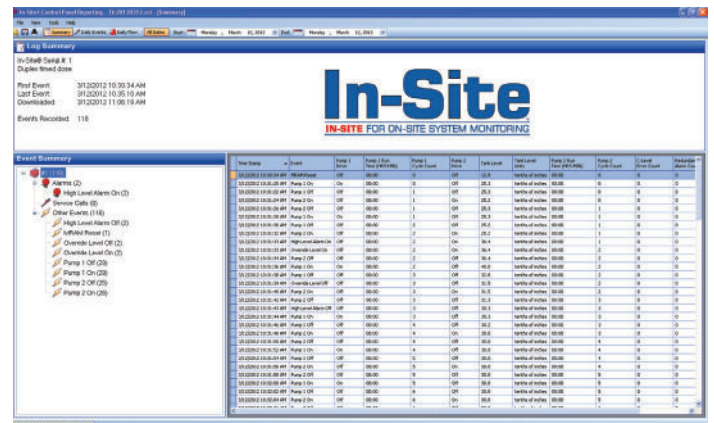
The "Log Summary" screen will appear.

16. To change the pump flow rate, click on "Tools" then "Options". A screen to adjust the "Unit of Measure", "Pump 1 Flow Rate" and Pump 2 Flow Rate" will appear. Adjust rates as needed.



CREATING A REPORT

17. For instructions on creating a report using the In-Site software, please click "Help" on the menu bar.
18. Choose "In-Site Reporting Help" (F1). The In-Site Reporting help screen will appear. Follow help instructions to create a custom report.



Technical Support: +1 800-746-6287
techsupport@sjerhombus.com
www.sjerhombus.com

Technical Support Hours:
Monday - Friday, 7 A.M. to 6 P.M. Central Time