

PANEL MOUNTING POST

Provides Easy Installation of Control Panels

The **Panel Mounting Post** is designed to make installing control panels easier. The post features a removable door for easy wiring. It can be mounted directly into ground, over a 4 x 4 post, or conduit for a quick, clean, easy installation. Accommodates enclosures with a minimum depth of 6" and maximum overall dimensions of 14 x 12 x 6 inches, including SJE Rhombus® 112, 115, TD, IFS Simplex, and EZ Series® controls panels.

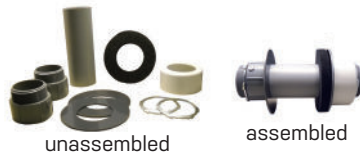
FEATURES

- Includes 4 stainless steel mounting bolts with gaskets and drilling template
- Indents for anchoring to 4 x 4 post
- Rugged polyethylene construction

ACCESSORIES

Riser Mounting Kit

- Secures panel mounting post to tank riser.
- Includes: 2" hub assembly, 2" x 6" PVC pipe, connecting hardware and conduit.



Simplex Installation Kit

- Provides easy weather-proof wire installation for simplex control panels.
- Includes: 2" conduit hub assembly, 2" cord seal, 3/4" hub assembly.



Duplex Installation Kit

- Provides easy weather-proof wire installation for duplex control panels.
- Includes: 2.5" conduit hub assembly, 2.5" cord seal, 3/4" conduit hub assembly.

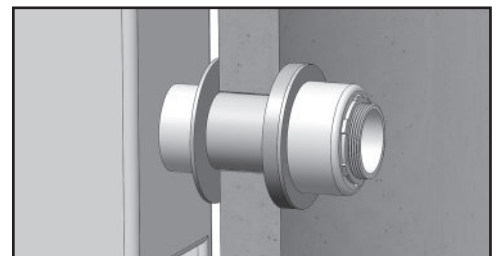


PART NO. DESCRIPTION

- **1038027** Panel Post Assembly
- **1038262** Riser Mounting Kit
- **1038029** Simplex Installation Kit
- **1038030** Duplex Installation Kit



Riser Mounting Kit



Simplex/Duplex Installation Kit

