



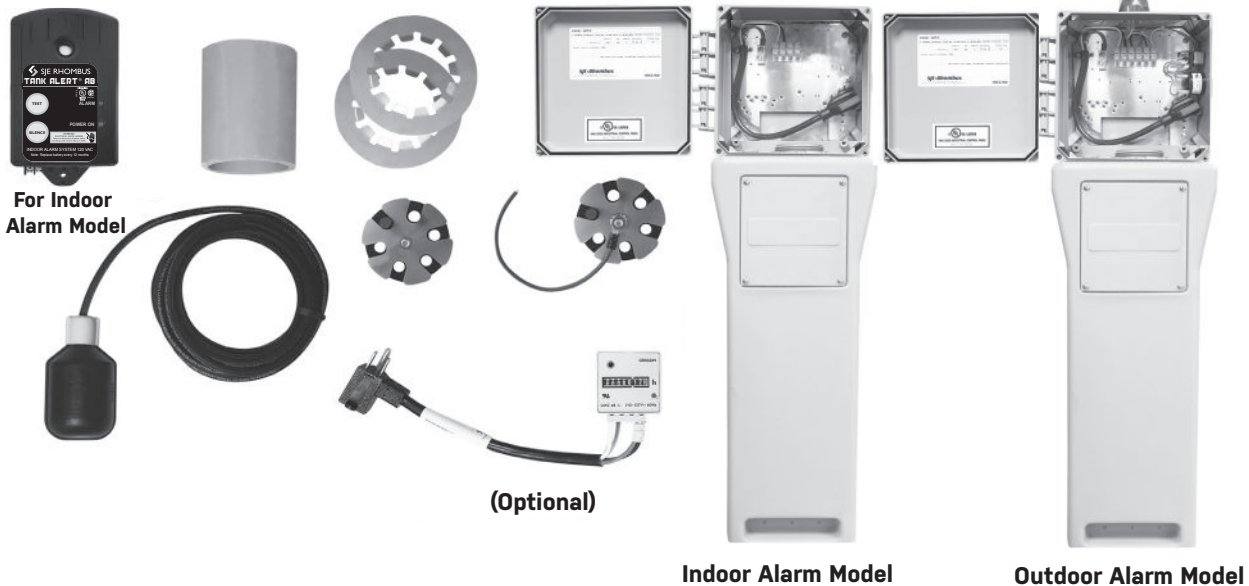
Quick Post Plus™ Installation Instructions

This junction box provides a convenient location to connect all wiring required for a typical pumping station installation. The junction box employs a receptacle to accept a 120 VAC or 230 VAC piggy-back pump switch plug and a pump plug.

The Quick Post Plus™ also features an easy-to-use terminal strip which can be used for connecting an alarm system in the junction box.

The Quick Post Plus™ package ensures a liquid-tight seal and strain relief for the cable entering the junction box from the pumping station.

QUICK POST PLUS™



- NEMA 4X enclosure rated for outdoor use.
- 22" post with riser kit.
- Receptacle for pump & pump switch (120V or 230V).
- Custom engineered liquid-tight cord seal.
- Strain relief for pump and float cords provided by cord seal.
- Terminal strip for use with alarm system.
- Five-year limited warranty.

PREVENTATIVE MAINTENANCE

- Periodically inspect the product. Check that the cable has not become worn or that the housing has not been damaged so as to impair the protection of the product. Replace the product immediately if any damage is found or suspected.
- Periodically check to see that the floats are free to move and operate the pump and alarm.
- Use only SJE Rhombus® replacement parts.

SJE RHOMBUS® FIVE-YEAR LIMITED WARRANTY

Five-Year Limited Warranty. For complete terms and conditions, please visit www.sjerrhombus.com.

NOTICE!

Products returned must be cleaned, sanitized, or decontaminated as necessary prior to shipment to ensure that employees will not be exposed to health hazards in handling said material. All applicable laws and regulations shall apply.

⚠ WARNING**ELECTRICAL SHOCK HAZARD**

Disconnect power before installing or servicing this product. A qualified service person must install and service this product according to applicable electrical and plumbing codes.

⚠ WARNING**EXPLOSION OR FIRE HAZARD**

Do not use this product with flammable liquids. Do not install in hazardous locations as defined by National Electrical Code, ANSI/NFPA 70.

Failure to follow these precautions could result in serious injury or death. Replace product immediately if switch cable becomes damaged or severed. Keep these instructions with warranty after installation. This product must be installed in accordance with National Electric Code, ANSI/NFPA 70 so as to prevent moisture from entering or accumulating within boxes, conduit bodies, fittings, float housing, or cable.

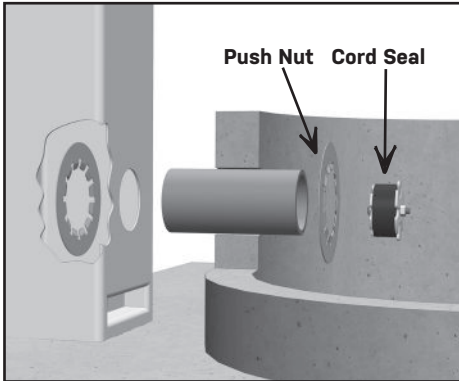
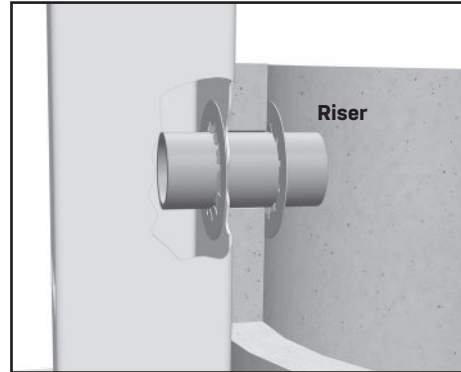
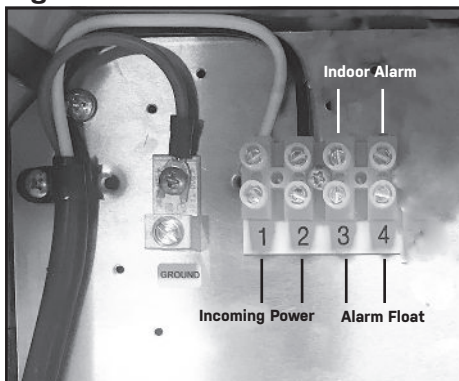
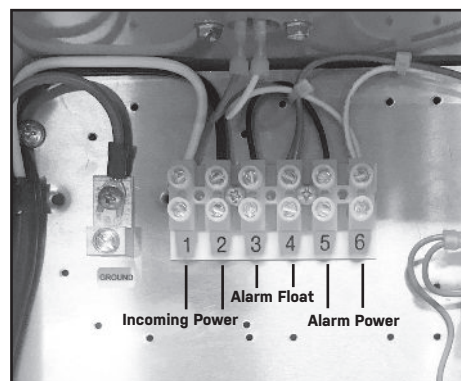
For detailed specifications on this product, or for the complete line of SJE Rhombus® panel, alarm, and switch products, visit our web-site at www.sjrhombus.com.

INSTALLING THE QUICK POST PLUS™

1. Determine where the post will be mounted on the riser.
 2. Access the riser by providing a 3" access hole through the riser.
 3. Line up post to riser and create a 3" hole at same height as riser hole.
 4. Place the 6" conduit through post and riser. Slip one push nut over the conduit and slide the conduit through the riser wall as shown in Figure A.
 5. After installation through the riser, slip the second push nut over the conduit as shown in Figure B.
 6. Connect incoming pump power to positions 1 and 2. For outdoor alarm version, connect 120 VAC alarm power to positions 5 and 6 as shown in Figure D.
- NOTE: Overload protection, branch circuit protection and main disconnect provided by others.**
7. Pass the piggy-back plug, pump plug and alarm float cables through the 2.5" conduit.
 8. With the cord seal, route the three cables through the seal, leaving approximately 8" of cable to work with. Insert both cord seals into the panel terminal adapter and 6" piece of conduit and tighten the hex nut until adequate strain relief is achieved.

NOTE: Plug any open positions in the cord seal with the PVC plugs provided.

9. Gather all ground wires, (including grounding conductor on the cord seal), and washer. Route and secure to ground terminal.
10. Connect the conductors from the alarm float to positions 3 and 4. For indoor alarm, also connect alarm wires on top side of terminals 3 and 4. See Figure C. Run alarm wires back to indoor alarm location per state and local electrical codes.
11. Seal the 3/4" terminal adapter with a conduit sealing compound.
12. Plug the piggy-back pump switch plug and pump plug into the cord pigtail receptacle.
13. Secure the junction box cover using the two preinstalled screws.
14. Turn on power.
15. Check the installation by manually tipping the floats on the pump and then the alarm float.
16. Test the unit periodically to insure proper operation.

Figure A**Figure B****Figure C Indoor Alarm Model****Figure D Outdoor Alarm Model**

+ 1-800-746-6287

techsupport@sjeinc.com

www.sjrhombus.com

Technical Support Hours: Monday - Friday 7 A.M. to 6 P.M. Central Time

PN 1053758D 06/19

© 2019 SJE, Inc. All Rights Reserved.
SJE RHOMBUS is a trademark of SJE, Inc.