

Schematic Symbols



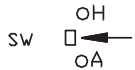
FUSE



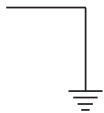
SPST SWITCH



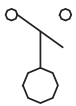
SPST PUSH SWITCH



HAND, OFF, AUTO SWITCH



GROUND



LIQUID LEVEL (N.O.) FLOAT



RED ALARM BEACON



AUDIO ALARM (HORN)



SOLID STATE FLASHER



MOTOR CONTACTOR COIL



ELAPSED TIME METER



EVENT COUNTER



GREEN INDICATOR LIGHT



START RELAY COIL



START RELAY (N.C.) CONTACT



RUN CAPACITOR



START CAPACITOR



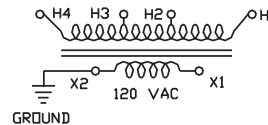
CONTROL RELAY COIL



(N.O.) CONTACT



(N.C.) CONTACT



MULTITAP TRANSFORMER



ANTI-CONDENSATION HEATER



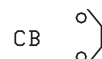
LIGHTNING ARRESTOR



THERMAL CUTOUT (N.C.)



PUMP (MOTOR)



CIRCUIT BREAKER